


# REQUEST FOR QUOTATION

	<b>BHARAT HEAVY ELECTRICALS LIMITED</b> Electronics Division PB No. 2606, Mysore Road Bangalore - 560026 INDIA	<b>RFQ NUMBER:</b> ANK0000232  <b>RFQ DATE :</b> 04.06.2019	Due Date/Day: 12.06.2019 WED Time : 13:00 HRS Tender Box : Reception Area Opening Venue: NEW ENGG. BLDG
MMI:PU:RF:003			
(address for communication) :		(for all correspondence) Purchase Executive : Ankita Reja Phone : 08025146134 Fax : E-mail: ankitareja@bhel.in	

1. Please drop your offer before due date & time in the tender at the reception of BHEL-ESD, Electronic city-1, Bangalore.
2. Offers by e-mail are also accepted. The offers by Email shall be sent to Email ID defnesdmm@bhel.in with subject line RFQ: ANK0000232.
3. Quotations and Items should be delivered to:  
 BHEL-ESD,  
 PLOT NO 98,  
 ELECTRONIC CITY PHASE 1,  
 HOSUR ROAD,  
 BANGALORE-560100,  
 KARNATAKA.

Sl No.	Description	Qty	Unit	Delivery qty	Delivery Date
1	LI0679050477 5Ah Positive Metal comb * HSN/SAC : 3801  5Ah Positive Metal comb used in Li Ion Cell	300	NO	300	29.07.2019
2	LI0679050485 5AH Negative Metal comb * HSN/SAC : 3801  5AH Negative metal comb used in Li Ion cell	300	NO	300	29.07.2019
3	LI0679050493 100 AH POSITIVE METAL COMB * HSN/SAC : 3801  100 AH POSITIVE METAL COMB USED IN LI iON CELL	100	NO	100	29.07.2019
4	LI0679050501 100 AH NEGATIVE COMB * HSN/SAC : 3801  100 AH NEGATIVE COMB USED IN LI ION CELL	100	NO	100	29.07.2019
5	LI0679050519 5AH POSITIVE STUD * HSN/SAC : 3801  5AH POSITIVE STUD USED IN LI ION CELL	300	NO	300	29.07.2019
6	LI0679050527 5 AH NEGATIVE STUD * HSN/SAC : 3801  5 AH NEGATIVE COMB USED IN LI ION CELL	300	NO	300	29.07.2019
Total Number of Items -		6			

TWO PART BID - SUBMIT TECHNICAL AND PRICE BID IN SEPARATE SEALED COVERS

<b>NOTES:</b> 1. This RFQ is governed by: a) INSTRUCTIONS TO BIDDERS/SELLERS and GENERAL CONDITIONS OF CONTRACT FOR PURCHASE available at <a href="http://edn.bhel.com">http://edn.bhel.com</a> (RFQ-PO Terms & Conditions) b) Any other specific Terms and Conditions mentioned. 2. Bidders / Representatives who would like to be present during opening of offers are required to furnish authorization letter for the same. * The HSN/SAC no mentioned against the line items in the RFQ are indicative only.	For and On behalf of BHEL.   Ankita Reja Contrl Eqment - ESD  1 OF 2
--	--

## REQUEST FOR QUOTATION



BHARAT HEAVY ELECTRICALS LIMITED  
Electronics Division  
PB No. 2606, Mysore Road Bangalore - 560026  
INDIA

RFQ NUMBER:  
ANK0000232

RFQ DATE :  
04.06.2019

Due Date/Day: 12.06.2019 WED  
Time : 13:00 HRS  
Tender Box : Reception Area  
Opening Venue:  
NEW ENGG. BLDG

MMI:PU:RF:003

(address for communication) :

(for all correspondence)

Purchase Executive : Ankita Reja  
Phone : 08025146134  
Fax :  
E-mail: ankitareja@bhel.in

1.  
2.

### TWO PART BID - SUBMIT TECHNICAL AND PRICE BID IN SEPARATE SEALED COVERS

#### NOTES:

1. This RFQ is governed by:
    - a) INSTRUCTIONS TO BIDDERS/SELLERS and GENERAL CONDITIONS OF CONTRACT FOR PURCHASE available at <http://edn.bhel.com> (**RFQ-PO Terms & Conditions**)
    - b) Any other specific Terms and Conditions mentioned.
  2. Bidders / Representatives who would like to be present during opening of offers are required to furnish authorization letter for the same.
- \* The HSN/SAC no mentioned against the line items in the RFQ are indicative only.

For and On behalf of BHEL.

Ankita Reja  
Contrl Eqpmnt - ESD

2 OF 2

**RFQ No. ANK00000232 - SPECIAL INSTRUCTIONS**

1. The quotation is to be submitted in two parts "Techno-commercial bid and PQC bid" & "Price Bid" separately. Bid Shall Be Submitted As Per The Instruction Given In ITB & GCC - Instructions to bidders & General Terms and conditions.
2. Please drop your offer before due date & time in the tender box named "**WEDNESDAY**" kept at the reception of BHEL-ESD, Electronic city, Bangalore.
3. QUOTATIONS SHOULD BE SENT TO:  
BHEL-ESD, PLOT NO. #98, ELECTRONIC CITY PHASE 1, HOSUR ROAD, BANGALORE- 560100.
4. Offers by e-mail are also accepted. Offers by email should contain separate files for techno-commercial, PQC and price bids. The offers by Email shall be sent to Email ID [defnesdmm@bhel.in](mailto:defnesdmm@bhel.in) with the subject ANK0000232\_Metal combs and studs \_12.06.2019\_Wednesday
5. Tender opening Time is 01:30 PM on the tender due date, Place: Tender opening room @ BHEL-ESD, Electronic city Phase-1, Bangalore.
6. Please indicate the price both in figures and words clearly.
7. Please Quote Price Bid As Per Price Bid Format Enclosed.
8. Please Submit Unpriced Bid (Copy Of Price Bid After Hiding Price) Along With Technical Bid.
9. Any deviations from or additions to the ITB & GCC - Instructions to bidders & GCC - Instructions to bidders require BHEL's express written consent. The general terms of business or sale of the bidder shall not apply to this tender.
10. Non acceptance / deviations if any to the terms and conditions of the RFQ shall be clearly and explicitly mentioned in the offer, otherwise it will be treated that all the terms and conditions of the RFQ are accepted by the bidder in total.
11. Items to be manufactured and delivered as per PS-263-060
12. Following Documents are attached:-
  - i. ITB & GCC - Instructions to bidders & General Terms and conditions
  - ii. Commercial Terms ANNEXURE-A
  - iii. Price Bid Format
  - iv. Purchase Specification
13. Items should be delivered to  
BHEL-ESD,  
Plot #98,  
Electronic City Phase 1,  
Hosur Road,  
Bangalore- 560100.

**Commercial Terms Discussion For ANK0000232**

Sl. No.	BHEL Terms	Complied (Yes/No)	Remarks
1	<b>Payment Terms-For quotes in INR</b> 100% within 45 days after receipt and acceptance of material		
2	<b>Payment Terms-For quotes other than INR</b> 100% against sight draft with 45 days credit on negotiation of complete set of documents.		
3	<b>Penalty</b> (0.5% per week on the basic value of the undelivered quantity max upto 10%)		
4	<b>Delivery time</b> 8 weeks from the date of PO		
5	<b>Price Firm</b> (PVC not acceptable- Prices should be firm till execution of order)		
6	<b>Packing And Forwarding By Supplier</b>		
7	<b>Delivery Terms:</b> <b>For quotes in INR</b> -Free Door Delivery at BHEL ESD, Electronic City		
8	<b>Delivery Terms:</b> <b>For quotes other than INR</b> -FCA International Gateway Airport (For shipment by air, Refer Annexure II for details) OR CIF, ICD Bangalore. Port of discharge either Mumbai/Chennai (for shipment by sea)		
9	<b>Offer Validity</b> (90 days from the tender opening )		
10	<b>Taxes &amp; duties to be mentioned in offer (Applicable GST%)</b>		
11	<b>HSN Code</b>		
12	<b>Documents to be submitted along with supply of items.Confirmation for the same is required in technical offer.</b>		
a	Dimension Report		
b	Certificate of Conformance		
c	Certificate of Raw Materials		

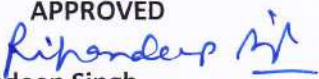

PRICE BID						
Price bid - ANK0000232						
Sl. No.	Description	Quantity	Currency	Unit Price	Total Price	Remarks
1	LI0679050477 5Ah Positive Metal Comb	300 NO				
2	LI0679050485 5AH Negative Metal Comb	300 NO				
3	LI0679050493 100AH Positive Metal Comb	100 NO				
4	LI0679050501 100AH Negative Comb	100 NO				
5	LI0679050519 5AH Positive Stud	300 NO				
6	LI0679050527 5AH Negative Stud	300 NO				
	GST (if applicable indicating %)					
A	Total cost including equipment and applicable taxes (in figures)					
	Total cost including equipment and applicable taxes (in words)					

	<b>PURCHASE SPECIFICATION FOR Li Ion CELL COMPONENTS</b>	PS-263-060
		REV. 00

**EQUIPMENT: Li Ion CELL COMPONENTS- Metal combs & studs**

**REVISION HISTORY SHEET**

REV NO	DATE	NATURE OF CHANGE	REASON	PREPARED BY	APPROVED BY
00		New Issue	-	Kaushal Jha	Ripandeep Singh

REVISION: 00	APPROVED  Ripandeep Singh		
	PREPARED  Kaushal Jha	ISSUED  ENG G	DATE  31-05-2019

**COPY RIGHT AND CONFIDENTIAL**

The information on this document is the property of Bharat Heavy Electrical Limited. It must not be used directly or indirectly in anyway detrimental to the interest to the company.



## **PURCHASE SPECIFICATION FOR Li Ion CELL COMPONENTS**

**PS-263-060**

**REV. 00**

### **PRE-QUALIFICATION CRITERIA FOR LI ION CELL COMPONENTS**

- The vendor shall have the required machining facilities to fabricate specified components.
- The vendor shall arrange to buy the raw materials as per BHEL specs & furnish the test certificates for same as required.
- Vendor has to do a Dimensional inspection of the fabricated components and submit the report to BHEL.
- Vendor has to design and realize the necessary jigs & fixtures/ dies to manufacture BHEL components.
- BHEL reserves the right to visit the vendor facilities before placing the order.
- Vendor has to agree to submit a sample before proceeding with actual fabrication of required quantities.
- Above conditions are not met, offer is liable for rejection

**COPY RIGHT AND CONFIDENTIAL**

The information on this document is the property of Bharat Heavy Electrical Limited. It must not be used directly or indirectly in anyway detrimental to the interest to the company.





## PURCHASE SPECIFICATION FOR Li Ion CELL COMPONENTS

PS-263-060

REV. 00

### SCOPE

This document establishes the specifications for the design, fabrication & supply of **Li Ion Cell components** as per details below. The components shall be delivered to BHEL, Electronics Systems Division, Electronic City, Bangalore.

### Technical Specification

- The components shall be fabricated using material as per the table given below. Supplier has to furnish the test report to compliance of material.
- General tolerance shall be assumed for dimension for which tolerance is not specified.

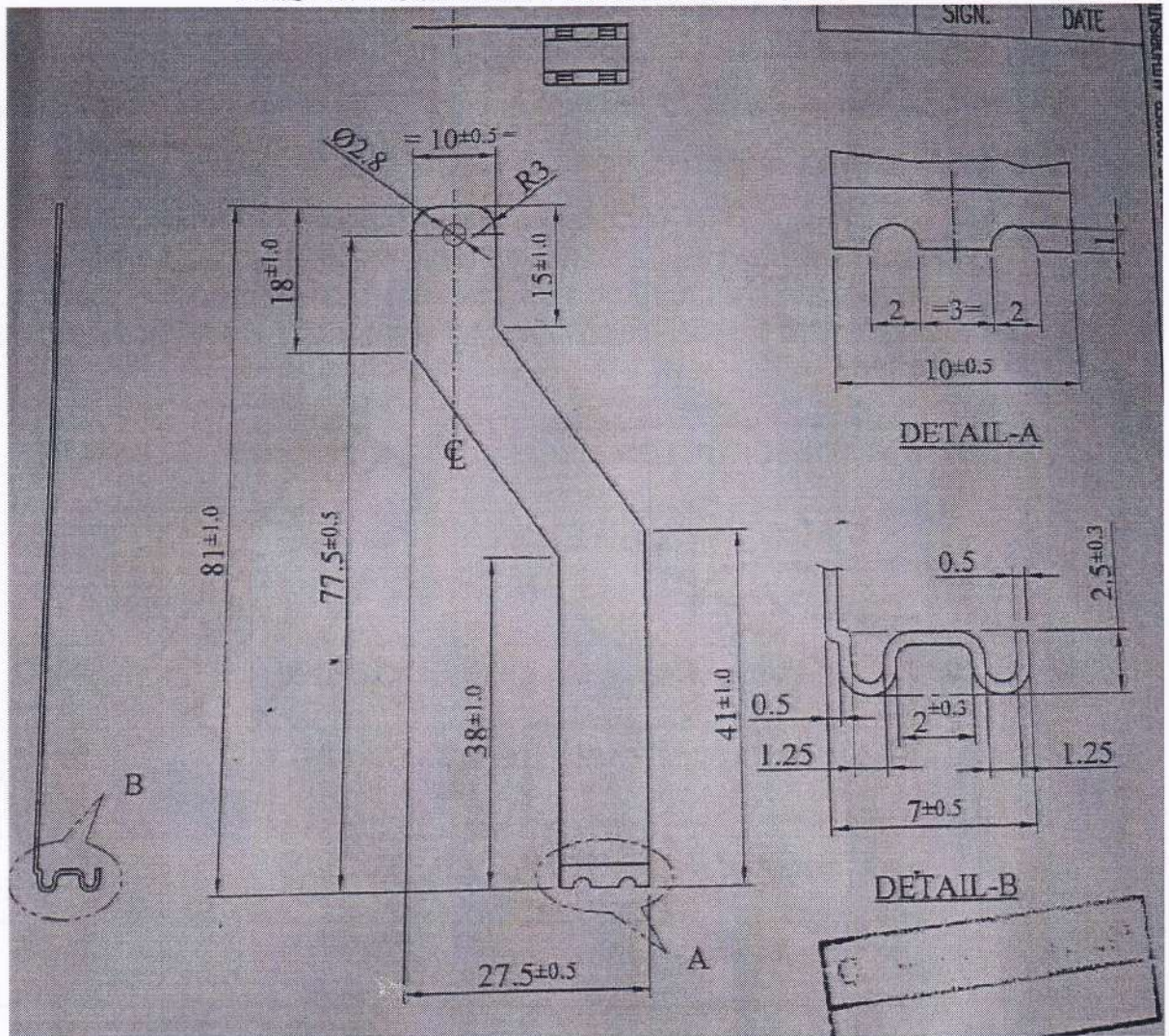
ITEM No	DESCRIPTION	Material	DRG REF
1.	Positive Metal comb- 5Ah	AA1050	Drg-1
2.	Negative Metal – 5Ah	Cu10100	Drg-2
3.	Positive Metal comb- 100Ah	AA1050	Drg-3
4.	Negative Metal – 100Ah	Cu10100	Drg-4
5.	Positive Stud- 5Ah	AA3003	Drg-5
6.	Negative Stud- 5 Ah	Cu10100	Drg-6

### COPY RIGHT AND CONFIDENTIAL

The information on this document is the property of Bharat Heavy Electrical Limited. It must not be used directly or indirectly in anyway detrimental to the interest to the company.



**DRG-1: POSITIVE METAL COMB 5AH**



COPY RIGHT AND CONFIDENTIAL

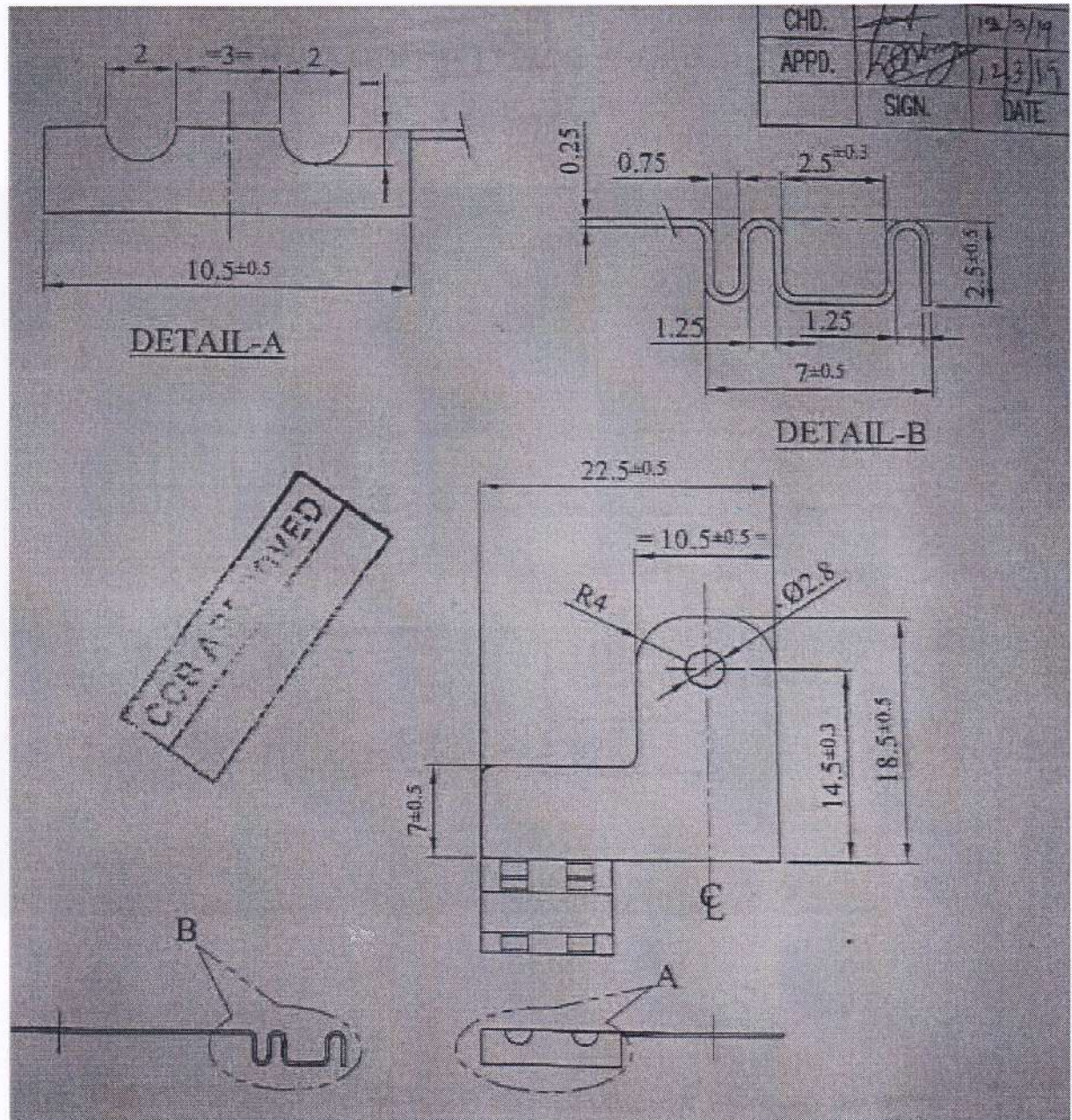
The information on this document is the property of Bharat Heavy Electrical Limited. It must not be used directly or indirectly in anyway detrimental to the interest to the company.



# **PURCHASE SPECIFICATION FOR Li Ion CELL COMPONENTS**

PS-263-060

REV. 00



COPY RIGHT AND CONFIDENTIAL

The information on this document is the property of Bharat Heavy Electrical Limited. It must not be used directly or indirectly in anyway detrimental to the interest to the company.



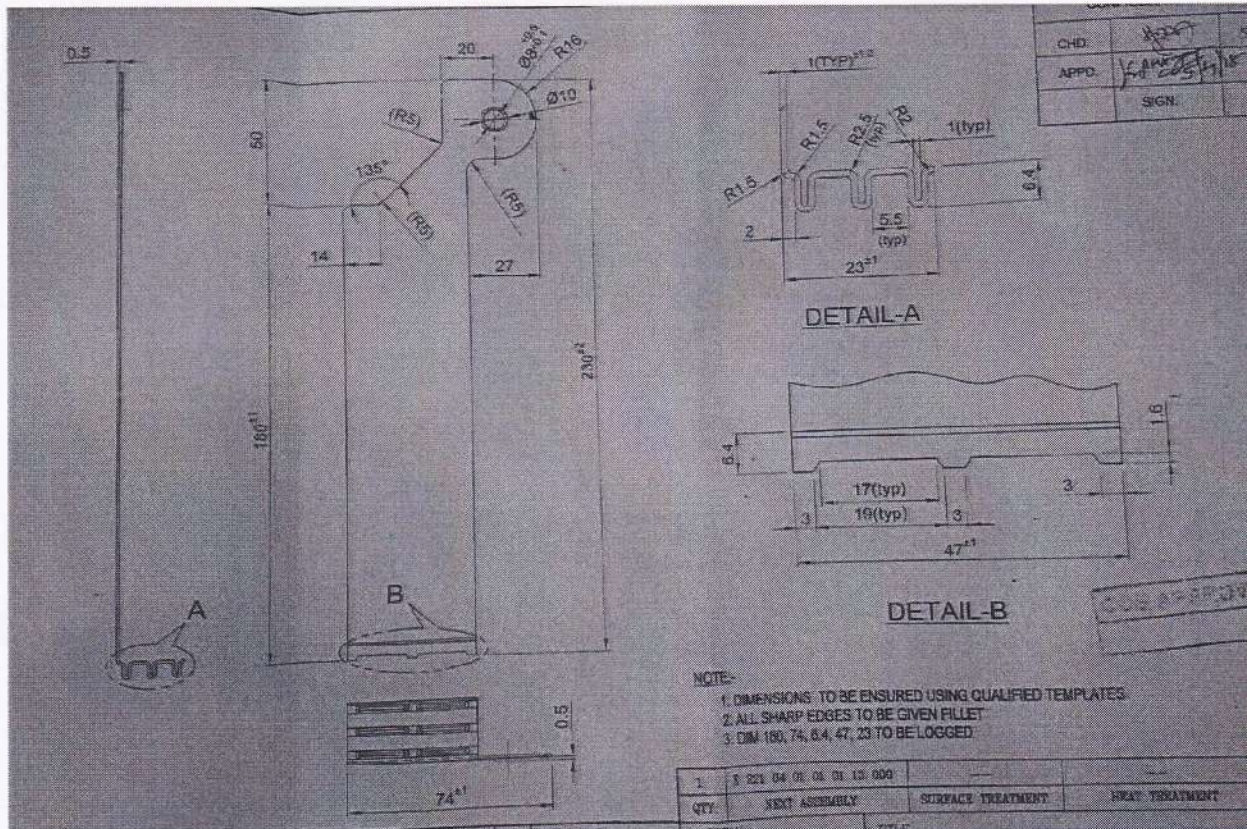


# PURCHASE SPECIFICATION FOR Li Ion CELL COMPONENTS

PS-263-060

REV. 00

## DRG-3: POSITIVE METAL COMB 100 AH



COPY RIGHT AND CONFIDENTIAL

The information on this document is the property of Bharat Heavy Electrical Limited. It must not be used directly or indirectly in anyway detrimental to the interest to the company.



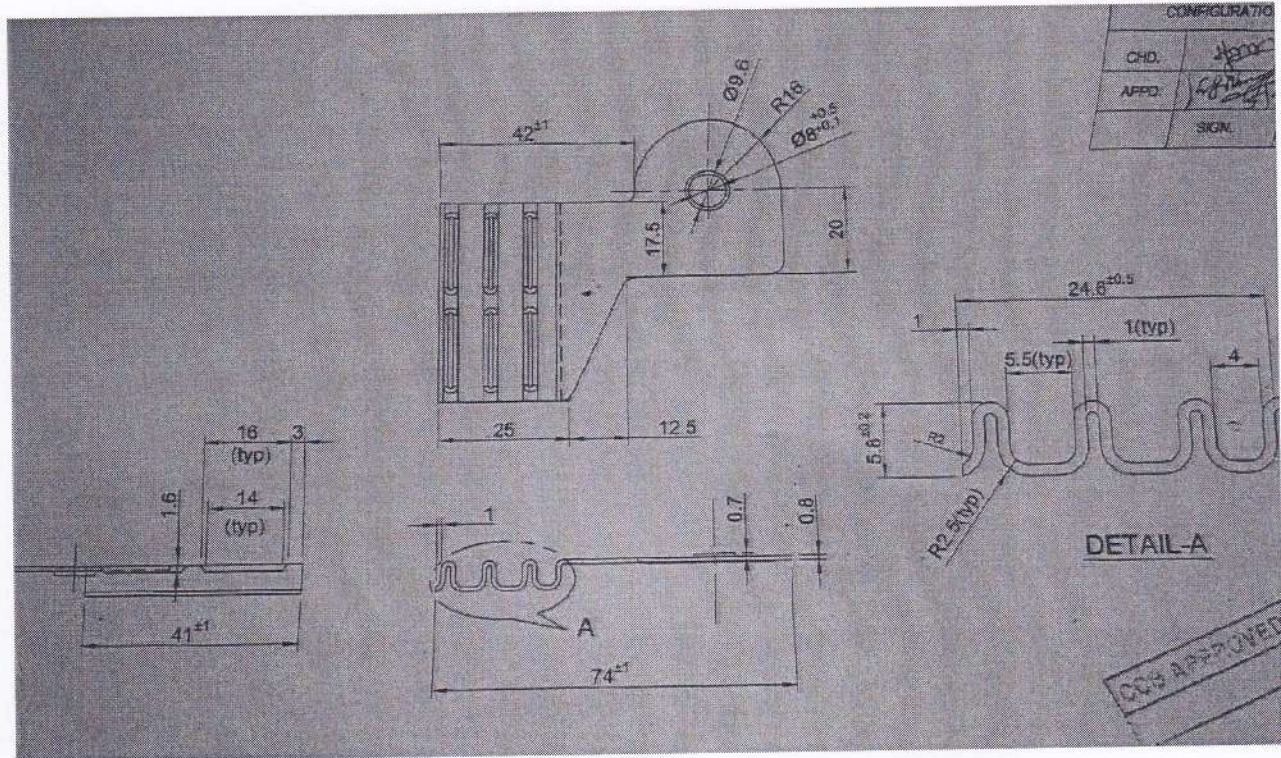


# PURCHASE SPECIFICATION FOR Li Ion CELL COMPONENTS

PS-263-060

REV. 00

## DRG-4: NEGATIVE METAL COMB 100 AH



COPY RIGHT AND CONFIDENTIAL

The information on this document is the property of Bharat Heavy Electrical Limited. It must not be used directly or indirectly in anyway detrimental to the interest to the company.



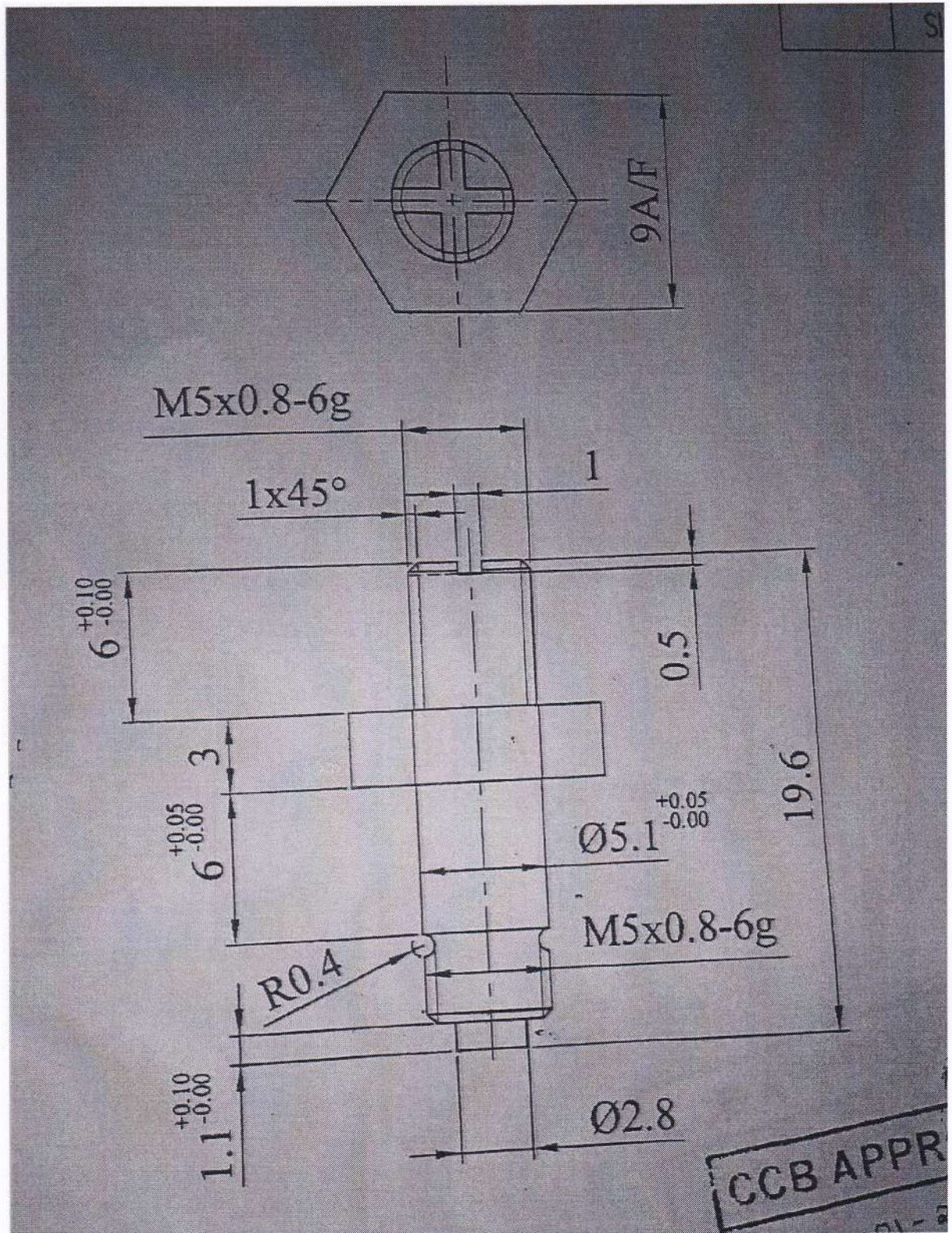


# PURCHASE SPECIFICATION FOR Li Ion CELL COMPONENTS

PS-263-060

REV. 00

## DRG-5: POSITIVE METAL STUD 5 AH



COPY RIGHT AND CONFIDENTIAL

The information on this document is the property of Bharat Heavy Electrical Limited. It must not be used directly or indirectly in anyway detrimental to the interest to the company.



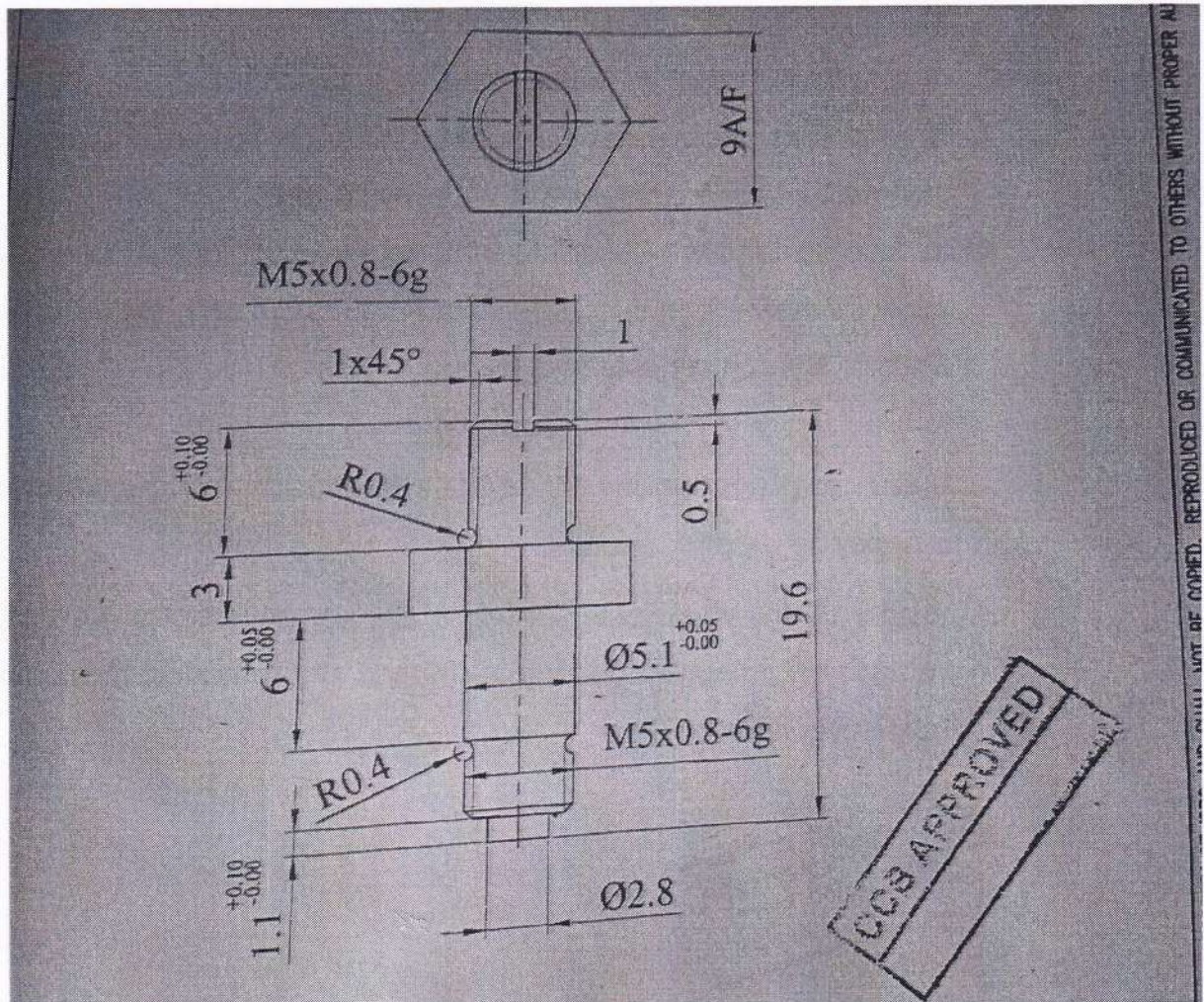


# PURCHASE SPECIFICATION FOR Li Ion CELL COMPONENTS

PS-263-060

REV. 00

## DRG-6: NEGATIVE METAL STUD 5 AH



COPY RIGHT AND CONFIDENTIAL

The information on this document is the property of Bharat Heavy Electrical Limited. It must not be used directly or indirectly in anyway detrimental to the interest to the company.



## **PURCHASE SPECIFICATION FOR Li Ion CELL COMPONENTS**

**PS-263-060**

**REV. 00**

### **ACCEPTANCE CRITERIA**

1. Raw material certificates for Chemical analysis & Mechanical properties.
2. Dimensional Inspection report.
3. In case BHEL wants a sample to be submitted all components shall be manufactured only after sample approval by BHEL.
4. Vendor has to give a PSI call to BHEL for inspection of components at vendor's works. After successful completion of PSI only, vendor shall dispatch the components to BHEL.

#### **General**

- a. Vendor shall not use any oil/ lubricant for machining of components. Only IPA may be used for cleaning.
- b. Vendor to ensure suitable packing of the components for preventing any damage to components during transit and also to protect the components from environment.

#### **COPY RIGHT AND CONFIDENTIAL**

The information on this document is the property of Bharat Heavy Electrical Limited. It must not be used directly or indirectly in anyway detrimental to the interest to the company.